

# Whisper

C O L L E C T I O N

**APE**  
best *for* you



Whisper

APE  
*best for you*

PASSIONFUL

ELEGANT

FUN

EXOTIC

COOL

MODERN

ape grupo



# Bianco



*Whisper Bianco Rect. 31,6x90  
Kelly Bianco Rect. 31,6x90  
Decor Set (3) Whisper Bianco 31,6x90  
Alabama Sándalo 20x120*

# Cream



*Whisper Cream Rect. 31,6x90  
Kelly Bianco Rect. 31,6x90  
Decor Set (3) Whisper Cream Rect. 31,6x90  
Zócalo Whisper Tortora 12x31,6  
Cenefa Whisper Tortora 6x31,6  
Alabama Quercia 20x120*



# Corallo

# Grigio



*Whisper Bianco Rect. 31,6x90*  
*Whisper Grigio Rect. 31,6x90*  
*Kelly Corallo Rect. 31,6x90*  
*Mosaico Whisper Mix 31,5x27,4*



*Whisper Grigio Rect. 31,6x90*  
*Kelly Grigio Rect. 31,6x90*  
*Decor Led Grigio 31,6x90*  
*Alabama Faggio 20x120*



# Tortora

# Nero



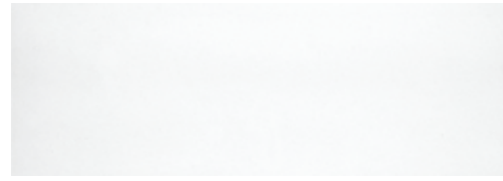
*Whisper Tortora Rect. 31,6x90*  
*Kelly Nero Rect. 31,6x90*  
*Palm Bianco 31,6x90*  
*Mosaico Whisper Nero 31,5x27,4*



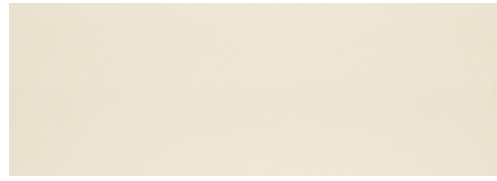
*Whisper Nero Rect. 31,6x90*  
*Whisper Bianco Rect. 31,6x90*  
*Kelly Nero Rect. 31,6x90*  
*Zócalo Whisper Nero 12x31,6*  
*Cenefa Whisper Nero 6x31,6*  
*Mosaico Whisper Nero 31,5x27,4*



# WHISPER COLLECTION



WHISPER BIANCO RECT. 31,6X90 / 12,5"X36"



**T18/M** WHISPER CREAM RECT. 31,6X90 / 12,5"X36"



**T36/M** WHISPER CORALLO RECT. 31,6X90 / 12,5"X36"



**T18/M** WHISPER GRIGIO RECT. 31,6X90 / 12,5"X36"



**T18/M** WHISPER TORTORA RECT. 31,6X90 / 12,5"X36"



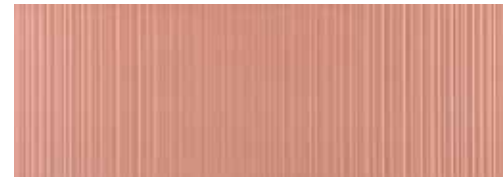
**T36/M** WHISPER NERO RECT. 31,6X90 / 12,5"X36"



**T04/M** KELLY BIANCO RECT. 31,6X90 / 12,5"X36"



**T04/M** KELLY CREAM RECT. 31,6X90 / 12,5"X36"



**T07/M** KELLY CORALLO RECT. 31,6X90 / 12,5"X36"



**T04/M** KELLY GRIGIO RECT. 31,6X90 / 12,5"X36"



**T04/M** KELLY TORTORA RECT. 31,6X90 / 12,5"X36"



**T07/M** KELLY NERO RECT. 31,6X90 / 12,5"X36"



**T05/P** DECOR LED BIANCO 31,6X90 / 12,5"X36"



**T05/P** DECOR LED CREAM 31,6X90 / 12,5"X36"



**T05/P** DECOR LED CORALLO 31,6X90 / 12,5"X36"



**T05/P** DECOR LED GRIGIO 31,6X90 / 12,5"X36"



**T05/P** DECOR LED TORTORA 31,6X90 / 12,5"X36"



**T05/P** DECOR LED NERO 31,6X90 / 12,5"X36"



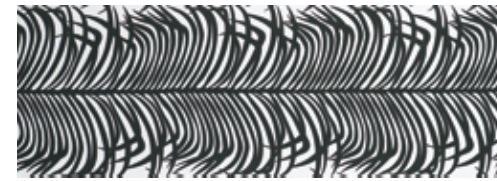
**T47/P** DECOR SET(3) MIA BIANCO 31,6X90 / 12,5"X36"



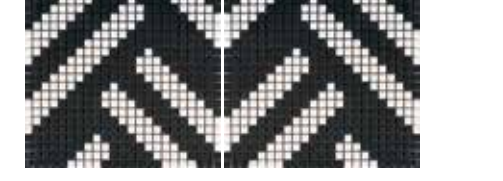
**T47/P** DECOR SET(3) MIA CREAM 31,6X90 / 12,5"X36"



**B03/P** MOSAICO WHISPER A MIX 31,5X27,4 / 12,5"X11"  
MOSAICO WHISPER B MIX 31,5X27,4 / 12,5"X11"



**T28/M** PALM BIANCO RECT. 31,6X90 / 12,5"X36"



**B03/P** MOSAICO WHISPER A NERO 31,5X27,4 / 12,5"X11"  
MOSAICO WHISPER B NERO 31,5X27,4 / 12,5"X11"

## RECOMMENDED FLOORING

ALABAMA 20X120			



**B08/P** CENEFFA WHISPER CREAM 6X31,6 / 2,5"X12,5"



**B08/P** CENEFFA WHISPER CORALLO 6X31,6 / 2,5"X12,5"



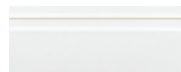
**B08/P** CENEFFA WHISPER GRIGIO 6X31,6 / 2,5"X12,5"



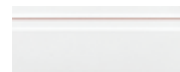
**B08/P** CENEFFA WHISPER TORTORA 6X31,6 / 2,5"X12,5"



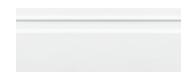
**B08/P** CENEFFA WHISPER NERO 6X31,6 / 2,5"X12,5"



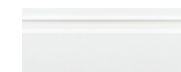
**T25/P** ZOCALO WHISPER CREAM 12X31,6 / 8"X12,5"



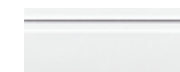
**T25/P** ZOCALO WHISPER CORALLO 12X31,6 / 8"X12,5"



**T25/P** ZOCALO WHISPER GRIGIO 12X31,6 / 8"X12,5"



**T25/P** ZOCALO WHISPER TORTORA 12X31,6 / 8"X12,5"



**T25/P** ZOCALO WHISPER NERO 12X31,6 / 8"X12,5"

# APE

best for you

## PACKING LIST WHISPER COLLECTION

FORMATO / SIZE		PZS / CAJA TILES / BOX	M2 / CAJA SQM / BOX	KG / CAJA KG / BOX	CAJAS / PALLET BOXES / PAELLET	M2 / PALLET SQM / PALLET	KG / PALLET KG / PALLET
31,6x90	12,5 " x 36 "	4	1,13	20	48	54,60	960

## TECHNICAL INFORMATION WHISPER COLLECTION

NAME, TEST	EUROPEAN NORM	VALUE
Size, thickness, side straightness, flatness, orthogonality	UNE-EN 14411	It accomplishes all requirements
Water absorption capacity	EN ISO 10545-03	> 10 %
Flexion resistance	EN ISO 10545-04	> 15 N/mm2
Thermic impact resistance	EN ISO 10545-9	It stands the test
Cracking resistance	EN ISO 10545-11	It stands the test
Resistance to acids	EN ISO 10545-13	GLA
Resistance to bases	EN ISO 10545-13	GLA
Resistance to cleaning products and chemical products for swimming pool water	EN ISO 10545-13	GA
Stains resistance	EN ISO 10545-14	5

**ape**grupo

CIUDAD DEL TRANSPORTE C/LUXEMBURGO, 46  
12006 CASTELLON - SPAIN  
TEL. + 34 964 340 434 FAX. +34 964 255 606  
www.apegrupo.com apegrupo@apegrupo.com